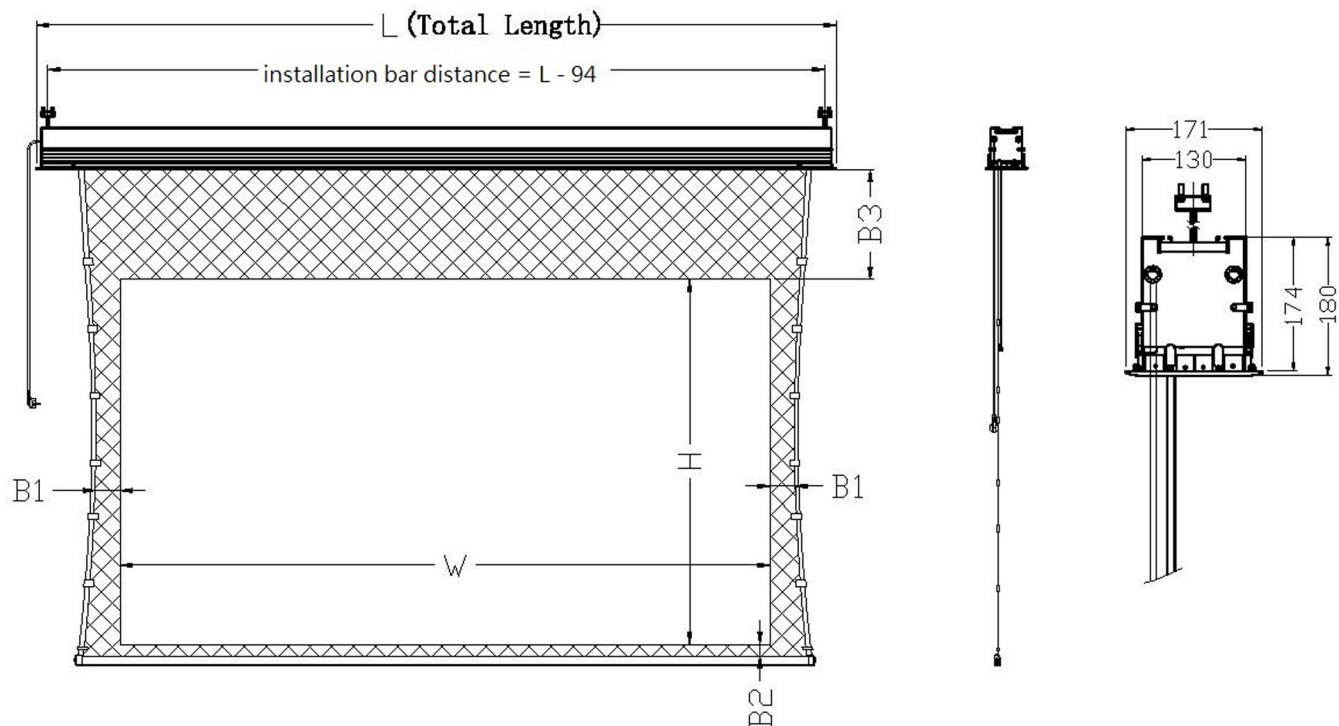


## In-Ceiling Tab Tensioned Home Theatre 16:9



	6FT	7FT	8FT	9FT
<b>Diagonal Picture</b>	<b>77"</b>	<b>92"</b>	<b>106"</b>	<b>120"</b>
W (mm)	1705	2037	2347	2657
H (mm)	959	1146	1320	1494
B1 (mm)	80	80	80	80
B2 (mm)	65	65	65	65
B3 (mm)	400	400	400	400
L (mm)	2324	2656	2966	3276
Cut out width (mm)	158	158	158	158
Cut out length (mm)	2298	2630	2940	3250
Box length (mm)	NA	2770	3080	3400

Screen is supported by threaded steel bars at either end of the case. These must be fixed to a load bearing slab or structure.

