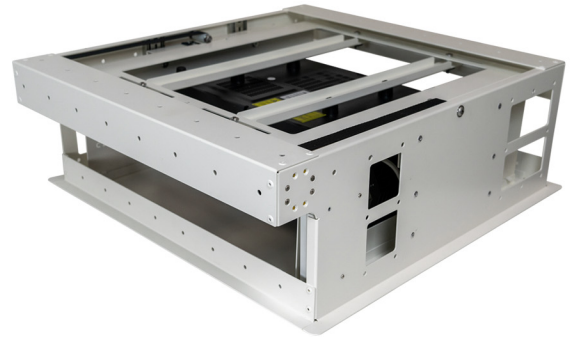


MK2 PROJECTOR LIFT



Ceiling Construction Requirements



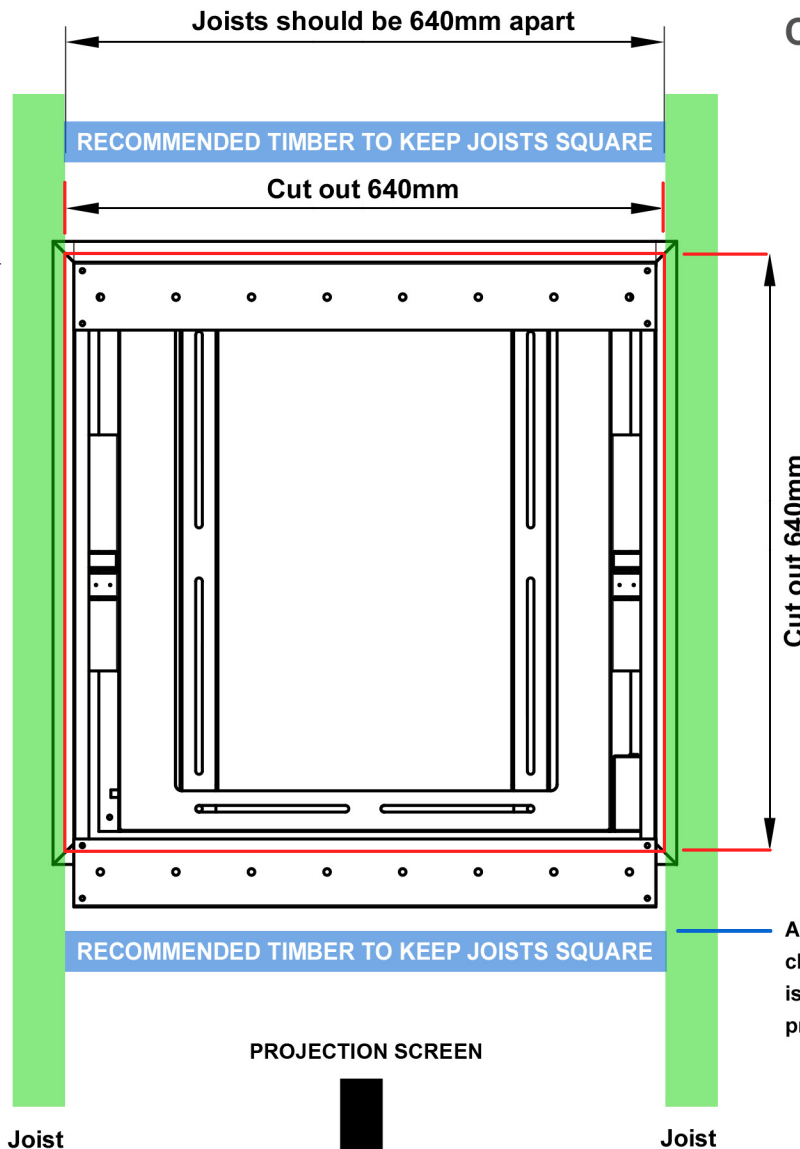
The diagrams show the projector lift from above and to the side. The supporting structure for the lift must be mounted 640mm apart, this is the same as the ceiling cut out dimension.

The fixings are screwed through the side of the lift into the joists on the left and right sides.

A minimum of 100mm of clear space within the ceiling is required at the front on the projector lift

DO NOT OVER TIGHTEN THE FIXINGS AS THIS CAN TWIST THE OUTER FRAME

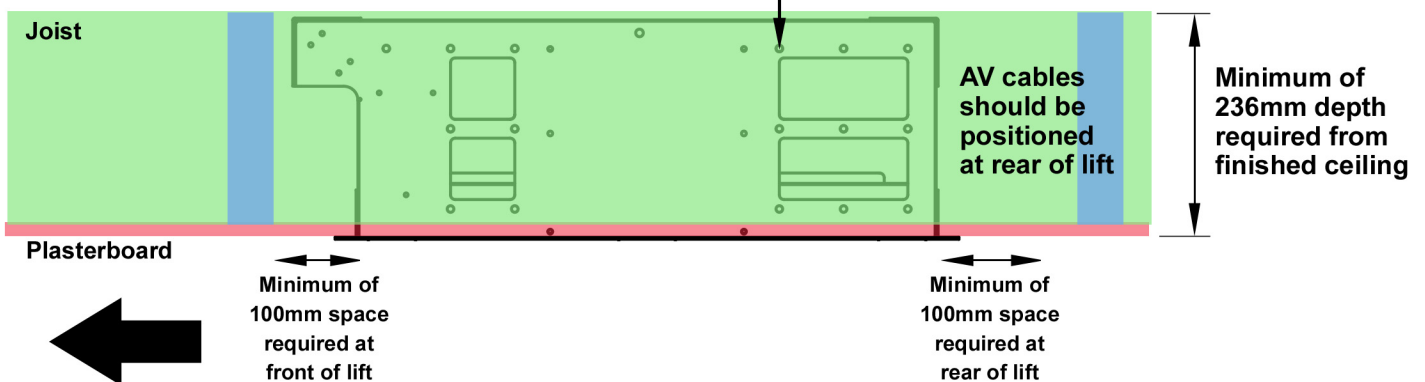
Fixing holes



PROJECTION SCREEN

Joist

Joist



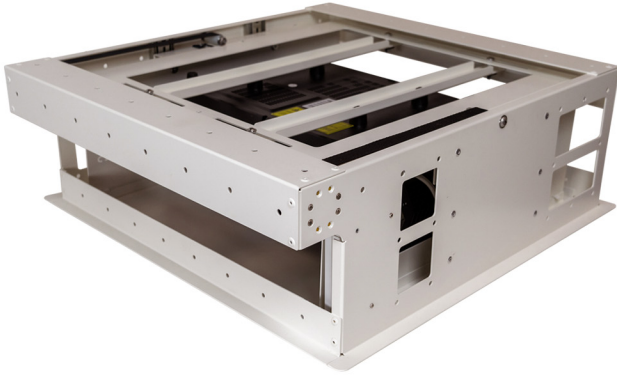
Minimum of 236mm depth required from finished ceiling

Minimum of 100mm space required at front of lift

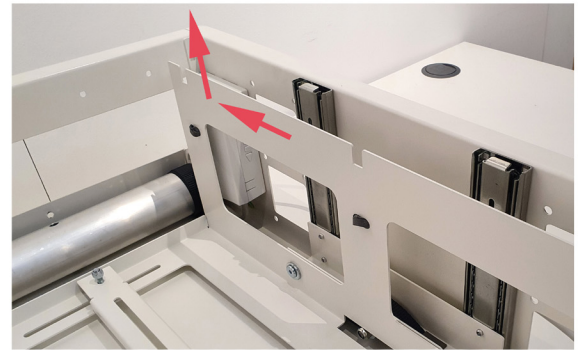
Minimum of 100mm space required at rear of lift

PROJECTION SCREEN

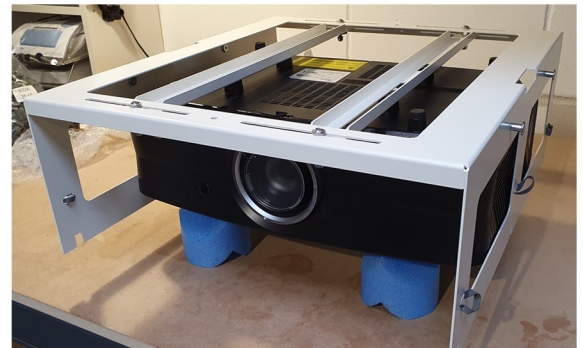
Installation of projector lift



1. Leave the lift on its back and remove the large white square ceiling cover panel. Detach the projector mount section by sliding it towards the motor then lifting upwards.



2. Place the projector upside down on the four blue packing corners. Place the projector section on top and slide the rails in place to align with projectors fixings. Bolt the projector on to the rails and mount the projector as centrally as possible.



3. Fix the main ceiling section of lift into the ceiling void and screw sideways into the floor joists or supporting structure.

Do not over tighten fixings as this can twist the metal casing

If IR operation is required, plug the IR eye into the RJ11 socket in the control box. The eye can be mounted externally on the ceiling near the lift or internally as a temporary control.



4. Wire power into the lift and bring the lift to the lower position using the manual buttons on the control box. You may need to pull down on the slider mechanisms as they do not have the weight of the projector to move them. Connect the required 12volt trigger cables and test the remote operation of the lift and screen. This can be done with a 9v PP3 battery. Bring through the AV cables from the rear of the lift.

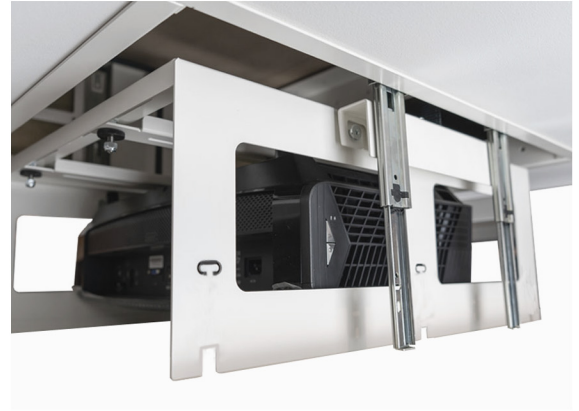


Installation of projector lift



5. Hook the projector section on to the mounting points and test the lift, making sure all cables are free from the moving parts.

Avoid using the manual buttons on the control box when the projector section is in place, this could cause injury.



6. THE TWO SAFETY CABLES MUST BE HOOKED ON TO THE PROJECTOR SECTION



7. The projector can be leveled using the fine adjustments on the projector rails.



8. Once satisfied with all the adjustments and operation, fit the ceiling panel to the lift using the side springs. **Ensure the ceiling panel fits on the inside of the projector section.**



Power Failure

In the event of a power failure the projector and lift can still be removed.

Lever the ceiling panel down on the left or right side and unhook the rubber bands to release the lid.

Lift the projector section up and slide it towards the front of the lift to release it.

The control box is now accessible and the main section of the lift can be removed.



intoAV
DISTRIBUTION

T: 01438 311 625 E: sales@intoav.com

